



**W O M B A T**  
**INSTRUCTIONS**

**PAIRING & RECONNECTING YOUR  
WOMBAT  
PINE PRO KEYBOARD**

- ▶ **RADIO FREQUENCY (RF)**
- ▶ **BLUETOOTH**

# PAIRING YOUR WOMBAT KEYBOARD VIA RADIO FREQUENCY (RF)



## 1 CHECK THE BATTERY CHARGE

- On the underside of the keyboard, turn the switch to the On position.
- If the three LEDs blink once, the internal lithium battery is charged and ready.
- If the LEDs do not blink, the keyboard must be plugged in via USB cable and charged for a minimum of 5 hours before connecting wirelessly.

## 2 USB-C USERS

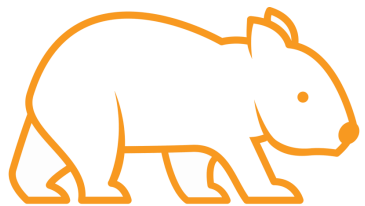
Add the Type A-to-Type C adapter to the top of the USB-A receiver.

Plug into your USB-C computer port.



## USB-A USERS

Plug the USB-A receiver into the USB-A port of your computer.



# PAIRING YOUR WOMBAT KEYBOARD VIA RADIO FREQUENCY (RF)

**3** TO PAIR THE RF WIRELESS RECEIVER, PRESS & HOLD FN +  FOR 3 SECONDS

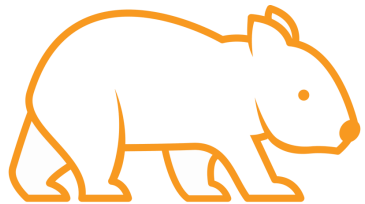
- Please note our RF receivers are generally pre-paired with our keyboards at the factory. In the event your receiver and keyboard are not linked, press and hold Fn + 1 for three seconds.
- Once paired successfully, the three LEDs will blink, and you may begin typing.



# RECONNECTING YOUR WOMBAT KEYBOARD VIA RADIO FREQUENCY (RF)

**4** TO RECONNECT THE ALREADY-PAIRED RF WIRELESS RECEIVER, ENSURE THE BATTERY IS IN THE ON POSITION AND PRESS FN + 

- Once reconnected successfully, the three LEDs will blink once, together, and you may begin typing.



# PAIRING YOUR WOMBAT KEYBOARD VIA BLUETOOTH

## 1 CLOSE ALL BLUETOOTH SETUP DIALOG BOXES

- If any Bluetooth setup dialog boxes are open, close them before proceeding with pairing.

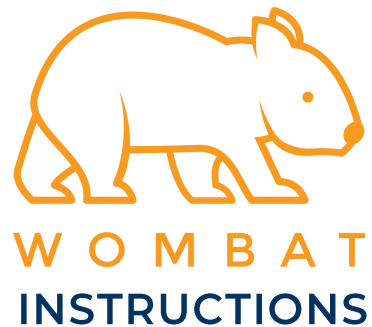
## 2 CHECK THE BATTERY CHARGE

Connect up to three devices to your keyboard via Bluetooth.

Pair your first device:

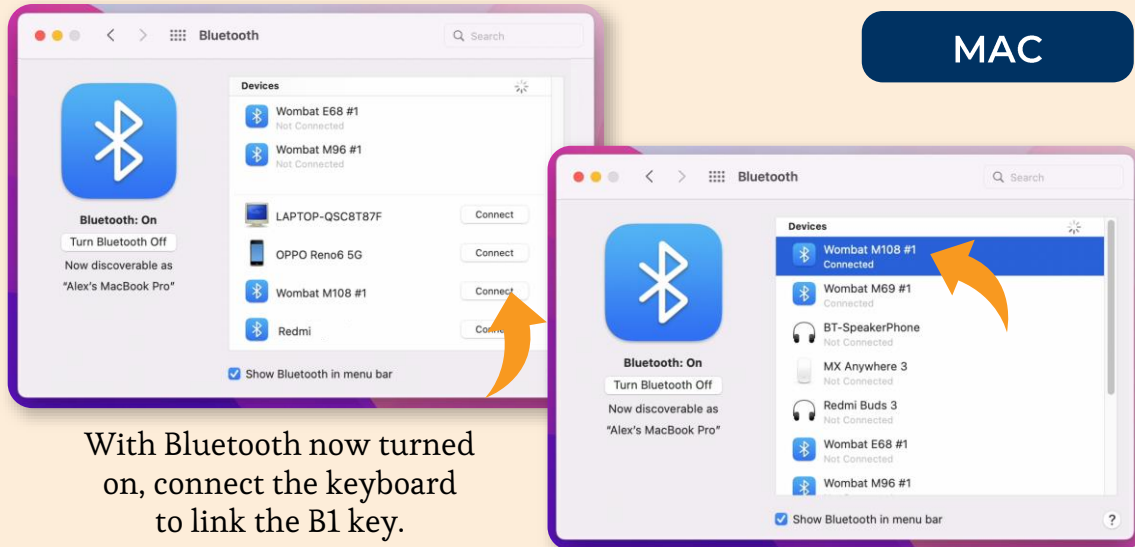
## 3 PRESS & HOLD FN + FOR 3 SECONDS

- The corresponding, leftmost LED will blink once, then all three LEDs will blink together.



# PAIRING YOUR WOMBAT KEYBOARD VIA BLUETOOTH

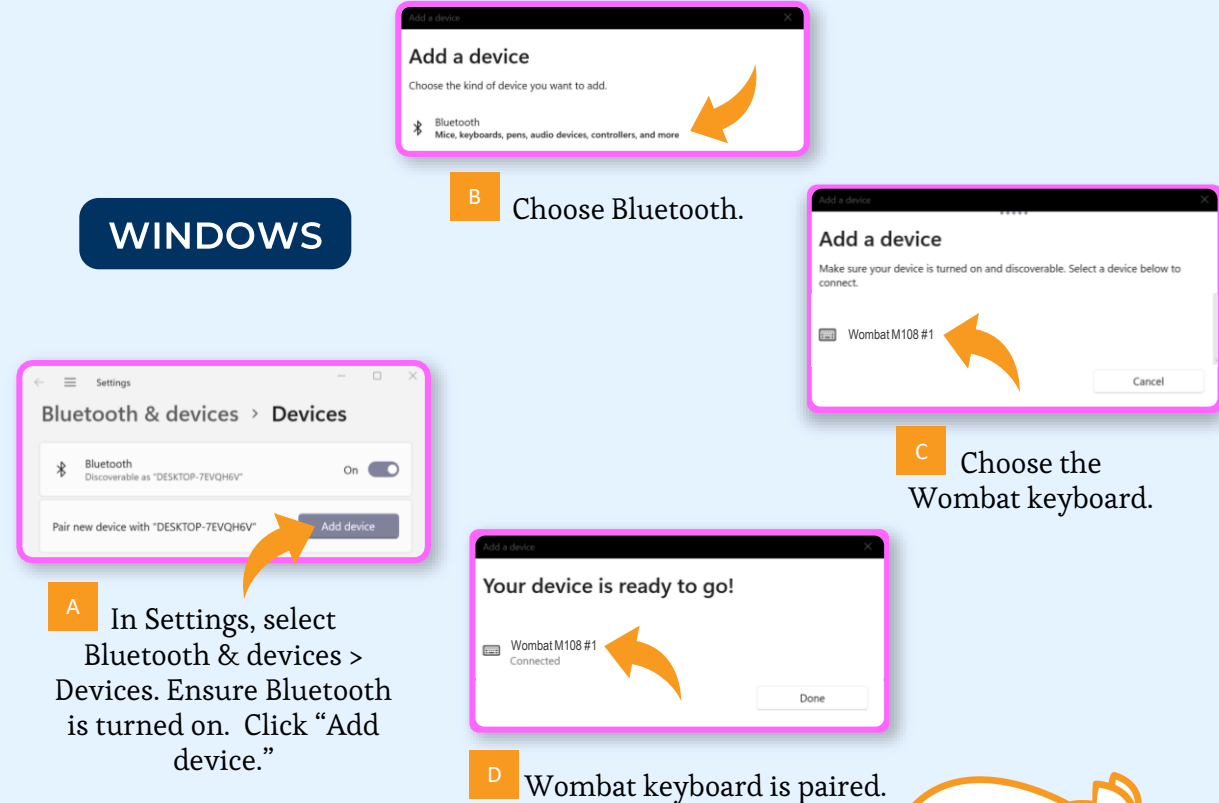
## 4 CONNECT TO BLUETOOTH



Wombat keyboard is connected and ready for typing.

5 REPEAT THE SEQUENCE FOR  AND  IF YOU WISH TO CONNECT THE KEYBOARD TO OTHER HOSTS

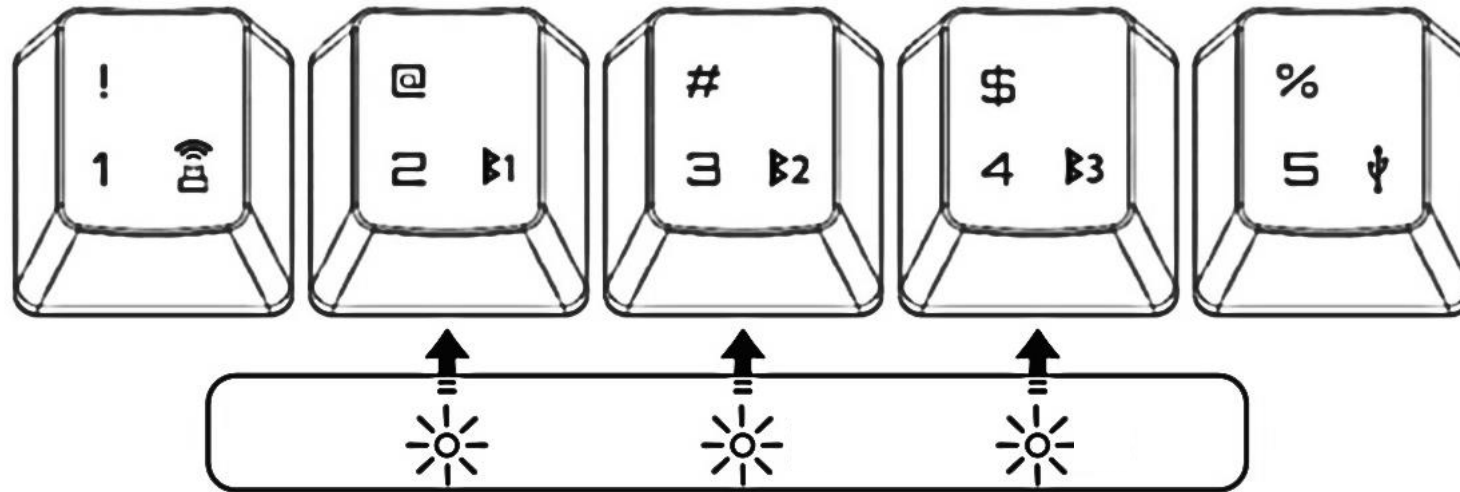
## WINDOWS



# RECONNECTING YOUR WOMBAT KEYBOARD VIA BLUETOOTH

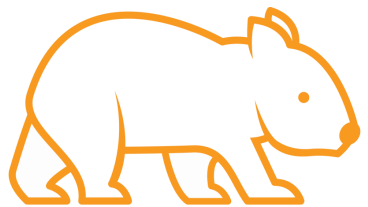
## 6 RECONNECT TO A PAIRED COMPUTER HOST

- Ensure the battery has charge and the switch is in the On position.
- Press Fn + B1, or B2, or B3 once and wait for the corresponding LED to blink once.



The LEDs correspond to the three bands of Bluetooth

Note: The keyboard must be paired whenever connecting to a new computer.





W O M B A T

## KEY SOURCE INTERNATIONAL



1 (510) 562-5000



[sales@ksikeyboards.com](mailto:sales@ksikeyboards.com)



[www.ksikeyboards.com](http://www.ksikeyboards.com)